



Joint Utility Board Sewage Treatment Plant Outfall Relocation Project: Project Update

Presentation for:

Cowichan Valley Regional District
Electoral Area Services Committee

By:

Clay Reitsma, M.Eng., P.Eng.
Senior Manager, Engineering
District of North Cowichan

November 4, 2020

Presentation Outline

2

- Update on project, including outfall location and proposed pipe routes
- Update on continued First Nations consultations
- Provide information on stakeholder and public engagement processes

Update

3

- 2015 consultations identified outfall site in Cowichan Bay (green triangle)
- 2018 – 2020 consultations established new outfall location (red dot) based on:
 - Scientific studies (Stage 2 EIS Outfall Report)
 - Indigenous knowledge
 - Consultations with local First Nations (ongoing)
- Ministry of Environment and Climate Change now consulting with First Nations; CSLWMP amendment approval should follow
- Receiving Environment Monitoring Program (REMP) designed; pre-discharge monitoring underway



Next Steps: Determine routing for pipe from treatment plant to outfall

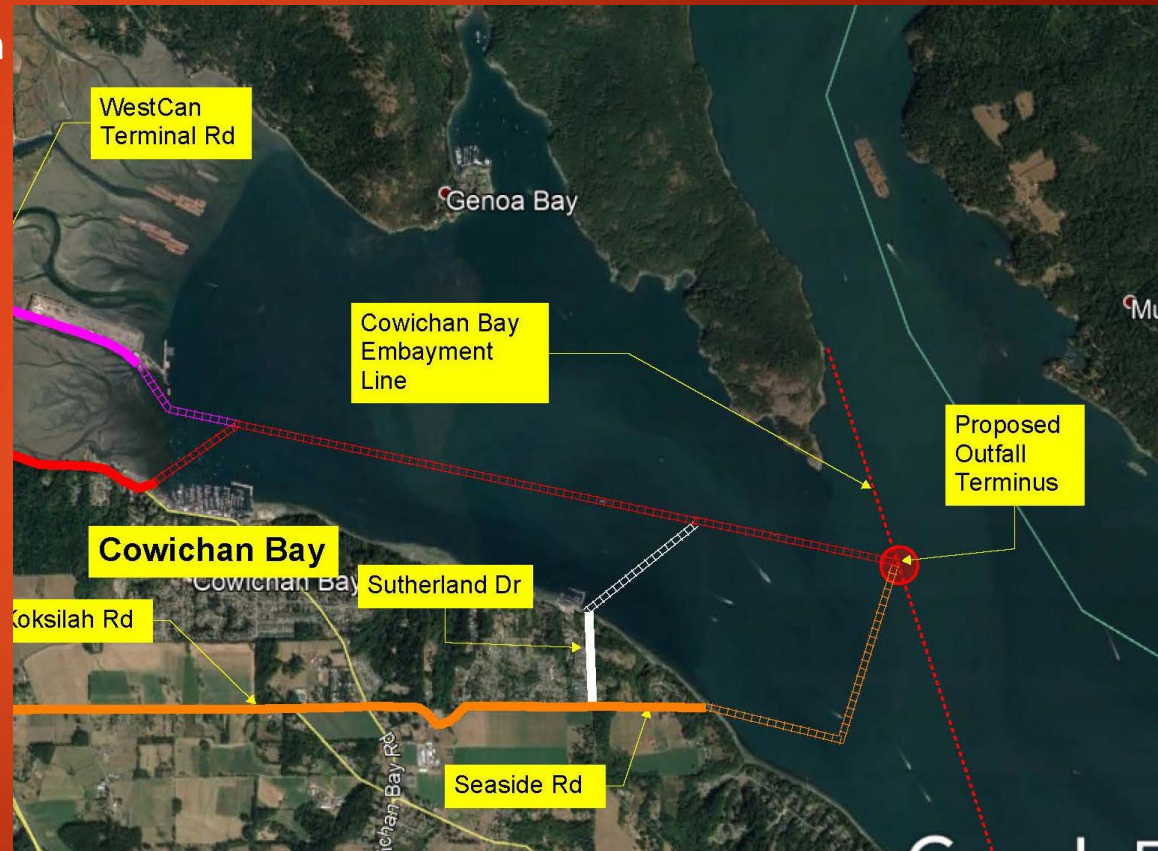
- Marine routing:
 - Options based on scientific study (Stage 2 EIS Marine Pipeline Route)
 - Four routes studied
 - Preference for pipe to lay on seabed
- Land routing:
 - 2 major options with variations
 - Pipe underground mostly in road rights-of-way
- In process of hiring design consultants – multiple studies yet to take place



Next Steps: Marine pipeline options

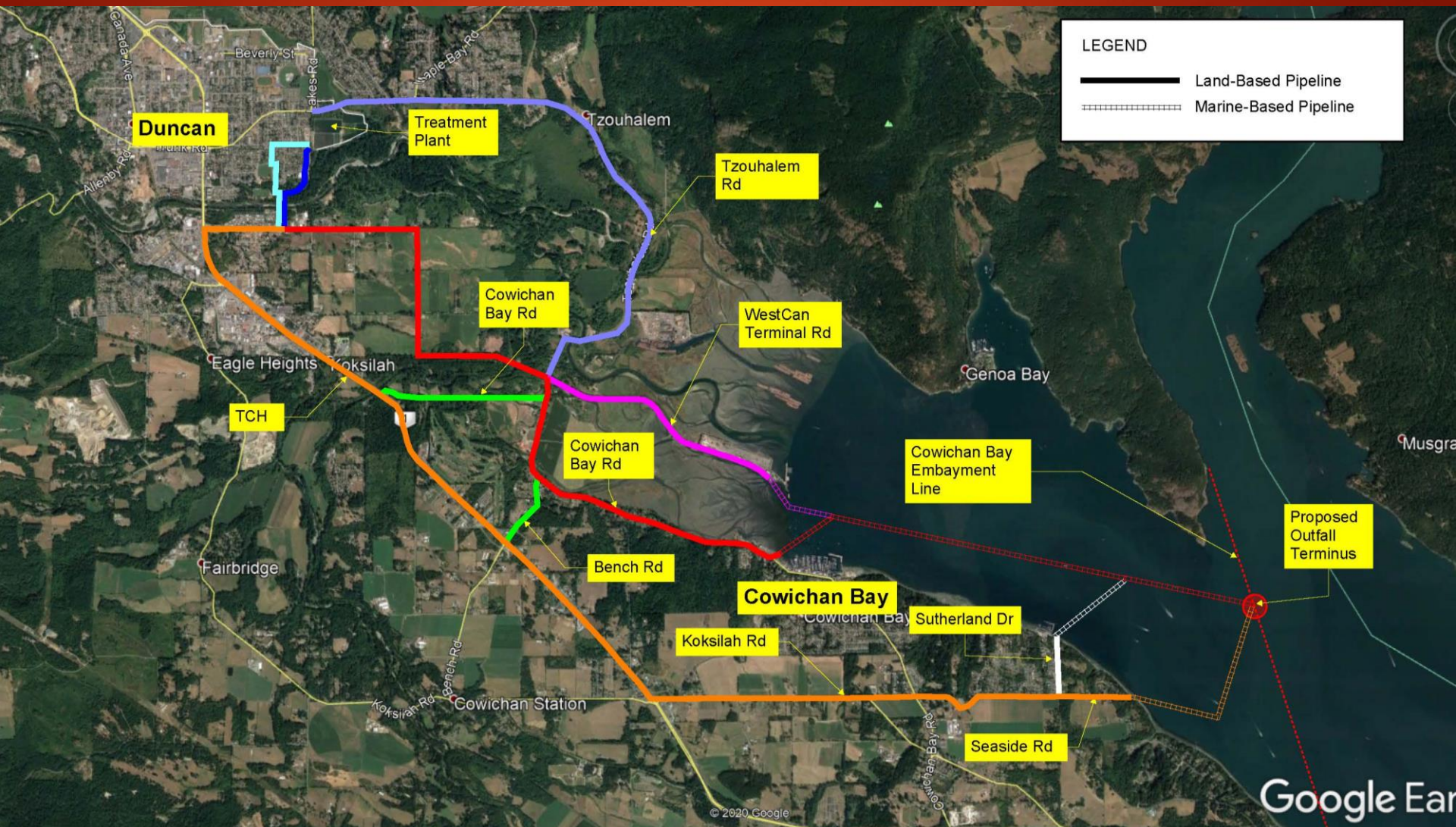
5

- Four options studied
 - Westcan Terminal Road
 - Hecate Park boat launch
 - Sutherland Drive
 - Seaside Road
- Full report (Stage 2 EIS Marine Pipeline Route) available on project website



Next Steps: Terrestrial pipeline options

6



Next Steps: Pipe Routing

7

- Need to study further:
 - Engineering constraints
 - Environmental and archeological assessments
 - Cost
- Will look for co-benefits
 - Working closely with Cowichan Tribes

Next Steps: Engagement and consultation

8

- COVID- safe approaches
- Ongoing consultation with local **First Nations**
- Ongoing **stakeholder** engagement through online meetings, emails
- Notification to MPs and MLAs
- **Public engagement** will take place mid-November to end of January 2021



Public Engagement

9

Information out:

- Website: www.northcowichan.ca/jub
- Video: “online open house”
- Advertising (media and social media)
- Information on PlaceSpeak
- **Mailer to Cowichan Bay area (TBD)**

Feedback provided by:

- Discussion on PlaceSpeak
- Emails and mail



- Links and information on how to engage
- All reports available
- Frequently asked questions

Joint Utility Board Sewage Treatment Plant Outfall Relocation Project

1. Background

The Joint Utility Board Sewage Treatment Plant is a hybrid secondary/tertiary treatment plant that treats wastewater from North Cowichan, Duncan, Cowichan Bay, Eagle Heights and Cowichan Tribes. The Plant is located on Cowichan Tribes' lands near Duncan. The Plant is operated by the District of North Cowichan and discharges highly treated effluent into the Cowichan River. The Outfall Project proposes to relocate the outfall to a new location in Satellite Channel.

The current outfall more than meets provincial standards, but there are several reasons to relocate the outfall to Satellite Channel:

- The treatment plant is on land leased from Cowichan Tribes. The lease

Related Links

[Climate Action and Energy Plan](#)

[Curbside Collection](#)

[Utilities](#)



Spotlight



Questions? Comments?

11

